

# THE UPPER WAPSIPINICON WATERSHED

**24% OF LANDOWNERS IN THE UPPER WAPSI WATERSHED REPORT FLOODING IN THEIR HOME, BUSINESS OR ON THEIR FARM IN THE LAST 5 YEARS.**

**16** of the 27 communities in the watershed are located on, or adjacent to, a stream or river. The waterways open communities to recreational and economic opportunities, but also make communities vulnerable to flooding.

**98% OF THE LAND IN THE UPPER WAPSI RIVER WATERSHED IS PRIVATELY OWNED** (UWR WATERSHED RAPID WATERSHED ASSESSMENT).

## THE UPPER WAPSI WATERSHED MANAGEMENT AUTHORITY

was founded in 2014 as a formal partnership between cities, counties, and county soil and water conservation districts (SWCDs). Members work together to assess and reduce flood risk, improve water quality, educate & empower watershed residents, and increase watershed resilience.

The members of the Upper Wapsipinicon River Watershed Management Authority

**CITY OF AURORA**  
**CITY OF CENTRAL CITY**  
**CITY OF DUNKERTON**  
**CITY OF ELMA**  
**CITY OF FREDERICKSBURG**  
**CITY OF FREDERIKA**  
**CITY OF HAZLETON**  
**CITY OF INDEPENDENCE**  
**CITY OF NEW HAMPTON**  
**CITY OF QUASQUETON**  
**CITY OF READLYN**  
**CITY OF RICEVILLE**  
**CITY OF SUMNER**  
**CITY OF TRIPOLI**  
**CITY OF WINTHROP**

**BLACK HAWK COUNTY**  
**BREMER COUNTY**  
**BUCHANAN COUNTY**  
**CHICKASAW COUNTY**  
**FAYETTE COUNTY**  
**HOWARD COUNTY**  
**LINN COUNTY**  
**MITCHELL COUNTY**  
**BLACK HAWK SWCD**  
**BREMER SWCD**  
**BUCHANAN SWCD**  
**CHICKASAW SWCD**  
**DELAWARE SWCD**  
**FAYETTE SWCD**  
**HOWARD SWCD**  
**LINN SWCD**  
**MITCHELL SWCD**

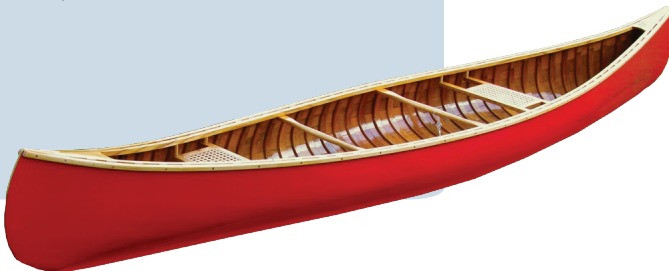
MEDIAN HOUSEHOLD INCOME THROUGHOUT THE WATERSHED IS APPROXIMATELY \$38,787 ANNUALLY.

ACCORDING TO IOWA DNR, **159 MILES OF IMPAIRED STREAMS FLOW THROUGH THE UPPER WAPSI WATERSHED.** FIVE OF THOSE MILES ARE COLD WATER STREAMS.



**FEDERAL AID** HELPS COMMUNITIES REBUILD AFTER A FLOODING DISASTER, BUT THOSE FUNDS **NEVER COVER THE FULL COST OF RECOVERY.**

Visitors made approximately 226,801 trips to the Upper Wapsi River in 2009 and spent \$6 million on outdoor recreation activities. (Survey, ISU Center for Agriculture and Rural Development)



**Row crops make up 75% of the total land cover in the Upper Wapsi Watershed—compared to 65% statewide.** Meanwhile, grass, pasture, and hay make up just 10% of land cover in the Upper Wapsi Watershed compared with 17% over the state as a whole.

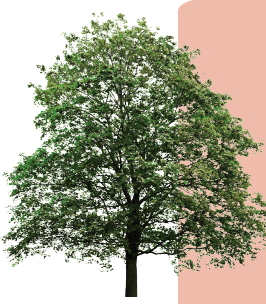
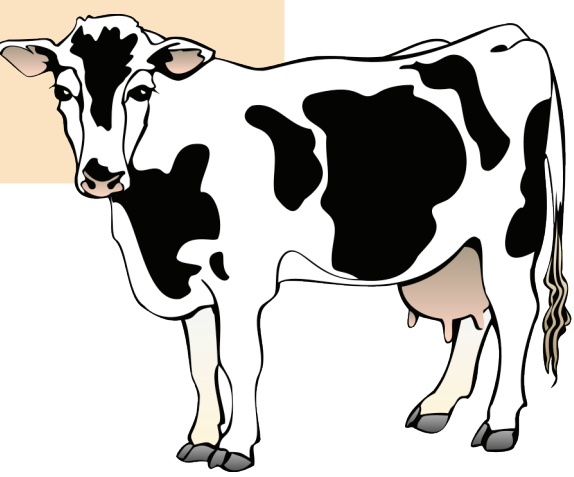
The Upper Wapsi Watershed contains **16 Wildlife Management Areas, 10 of which allow public hunting of deer, pheasant, turkey and other game animals.**



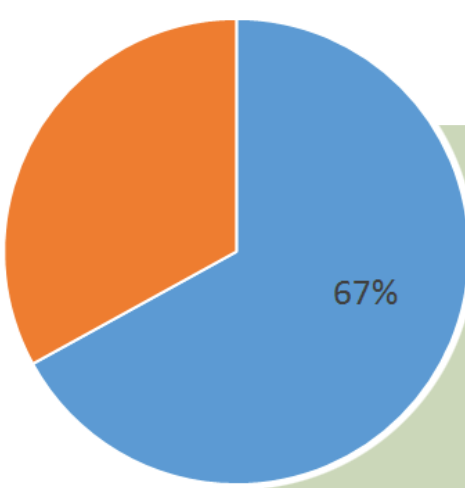
In a recent survey, **48% of landowners** in the Upper Wapsi River Watershed report that, within the last 5 years, **flooding closed a road or bridge they use**

According to a recent survey, **21% of people who own land** in the Upper Wapsi Watershed **live outside the watershed.**

According to Iowa DNR, there are 244 animal feeding operations in the Upper Wapsi Watershed—59 of which are classified “concentrated animal feeding operations” (CAFOs). A CAFO is an operation that houses at least 1000 animal units (1 animal unit is the equivalent of app. 1,400 dairy cows), confined on site for more than 45 days of the year.



**Only 4% of the Upper Wapsi Watershed is forested, while statewide 7% of land is in forest.**



**67% of landowners** in the Upper Wapsi River Watershed are **interested in helping to reduce flooding & improve water quality by putting at least one water management practice on their land.** (UWR Landowner Survey 2017).

## The Wapsipinicon River Bird Conservation Area

covers approximately **88,000 acres** in Bremer, Black Hawk, and Buchanan counties, and includes **Sweet Marsh Wildlife Area** and the Wapsipinicon River Greenbelt.

The area has a great variety of habitats that provide homes to diverse species—including the **Sandhill Crane, Red-Shouldered Hawk, and American Woodcock.**